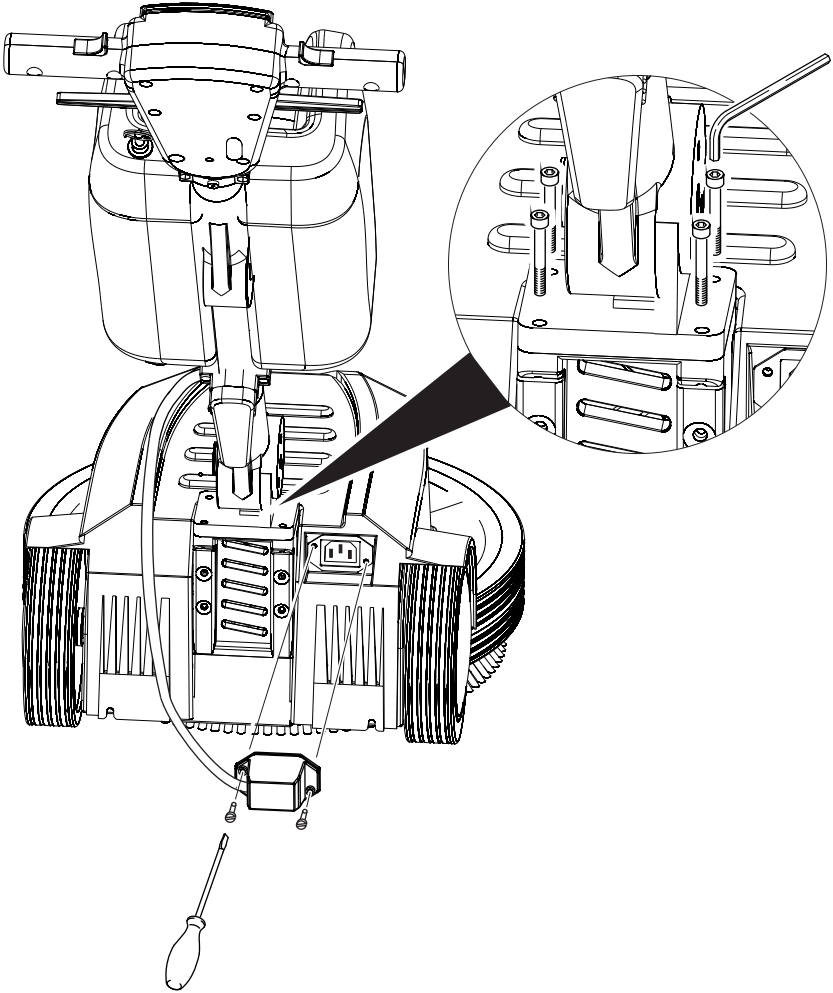




Register and win!  
[www.kaercher.com](http://www.kaercher.com)







Please read and comply with these original instructions prior to the initial operation of your appliance and store them for later use or subsequent owners.

## Contents

Environmental protection . . .	EN . . . 1
Symbols in the operating instructions . . . . .	EN . . . 1
Proper use . . . . .	EN . . . 1
Safety instructions . . . . .	EN . . . 1
Install the push rod . . . . .	EN . . . 2
Device elements . . . . .	EN . . . 2
Start up . . . . .	EN . . . 2
Operation . . . . .	EN . . . 3
Shutting down . . . . .	EN . . . 4
Transport . . . . .	EN . . . 4
Storage . . . . .	EN . . . 4
Maintenance and care . . . .	EN . . . 4
Troubleshooting . . . . .	EN . . . 5
Warranty . . . . .	EN . . . 5
Accessories and Spare Parts	EN . . . 5
Technical specifications . . .	EN . . . 6

## Environmental protection

	The packaging material can be recycled. Please do not throw the packaging material into household waste; please send it for recycling.
	Old appliances contain valuable materials that can be recycled; these should be sent for recycling. Batteries, oil, and similar substances must not enter the environment. Please dispose of your old appliances using appropriate collection systems.

### Notes about the ingredients (REACH)

You will find current information about the ingredients at:

[www.kaercher.com/REACH](http://www.kaercher.com/REACH)

## Symbols in the operating instructions

### **Danger**

*Immediate danger that can cause severe injury or even death.*

### **Warning**

*Possible hazardous situation that could lead to severe injury or even death.*

### **Caution**

*Possible hazardous situation that could lead to mild injury to persons or damage to property.*

## Proper use

Use this appliance only as directed in these operating instructions.

- The appliance is used for cleaning of hard surfaces and carpets in the interior of buildings.
- The appliance may only be equipped with original accessories and spare parts.
- The appliance is not suited for the use in potentially explosive environments.
- This appliance is suited for the commercial use, e.g. in hotels, schools, hospitals, factories, shops, offices, and rental companies.

## Safety instructions

Before using the appliance for the first time, read and observe these operating instructions and the accompanying brochure: Safety information for Disc single-pulley machine machines No. 5.956-659.0.

### Safety Devices

Safety devices serve to protect the user and must not be rendered in operational or their functions bypassed.

#### Lock

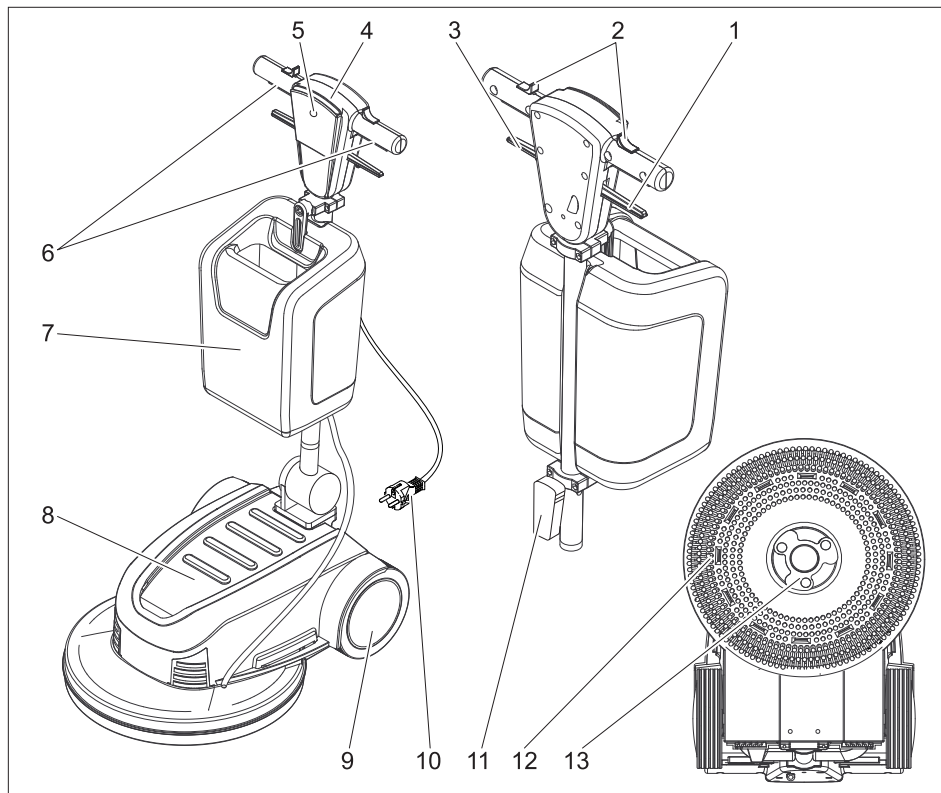
Prevents the appliance from being switched on accidentally. To start the appliance, first press the unlock button and then the ON/OFF switch.

## Install the push rod

Prior to operation, the push rod must be installed as shown and the appliance has to be connected to power.

**Illustrations on the inside of the front cover**

### Device elements



- 1 Lever for level adjustment
- 2 Unlocking button
- 3 Dosing lever for detergent solution
- 4 Handle
- 5 Indicator lamp for mains voltage
- 6 Switch ON / OFF
- 7 Detergent Tank
- 8 Motor casing
- 9 Wheel
- 10 Power cord
- 11 Cable hook

- 12 Brush / pad driver plate with pad
- 13 Actuator, disc brush / pad driver plate

### Start up

- ➔ Check the mains cable regularly for damage such as aging or formation of cracks. If you find a damage, then the cable must be replaced before using it any further.
- ➔ Check appliance for damage, have damages repaired by customer service.

## Power connection

- For connection values, see technical data and type plate.
- The electrical connections must be done by an electrician according to IEC 60364-1.

### **⚠ Danger**

*Risk of electric shock.*

- Do not drive over the mains cable.

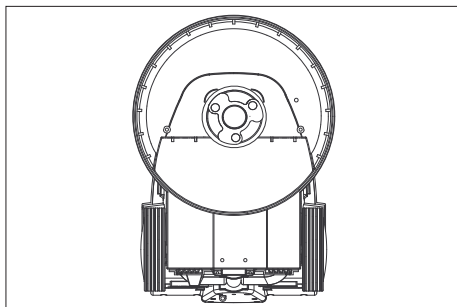
### **⚠ Danger**

*Risk of injury.*

- Never wrap the mains cable around your body or your neck.
- Do not let the mains cable come in contact with the rotating brushes or rotating pads.

## Attach the brush/pad

- ➔ Disconnect the mains plug from the socket.
- ➔ Pull the lever for level adjustment and bring the handle toward the front into a vertical position.
- ➔ Tilt the appliance rearward.



- ➔ Place the disc brush/driver plate onto the actuator and turn in anti-clockwise direction.

## Fill detergent tank

### **⚠ Warning**

*Risk of damage. Only use the recommended detergents. With respect to different detergents the operator bears the increased risk regarding the operational safety and danger of accident. Only use detergents*

*that are free from solvents, hydrochloric acid and hydrofluoric acid.*

*Follow the safety instructions for using detergents.*

- ➔ Fill detergent solution into the detergent tank.

## Operation

### **⚠ Warning**

*Risk of injury! The operation of the appliance requires practice.*

- Ensure that there are no obstacles in the area to be cleaned.
- Check the floor consistency for its suitability.
- The handling becomes more difficult with uneven or rough surfaces.

## Adjust handle

- ➔ Pull the lever for level adjustment.
- ➔ Tilt the handle into a comfortable position (arms outstretched).
- ➔ Release the lever for level adjustment.

## Turning on the Appliance

### **Caution**

*Risk of damage to the floor covering. Do not operate the appliance on the spot.*

- ➔ Insert the mains plug into a socket.  
The indicator lamp "main power" will illuminate.
- ➔ Set handle to working height.
- ➔ Hold the handle with both hands.
- ➔ Press and hold the unlocking button.
- ➔ Use the ON/OFF switch.
- ➔ Release the unlocking button.
- ➔ Release the switch to interrupt operation.

### **Control the direction**

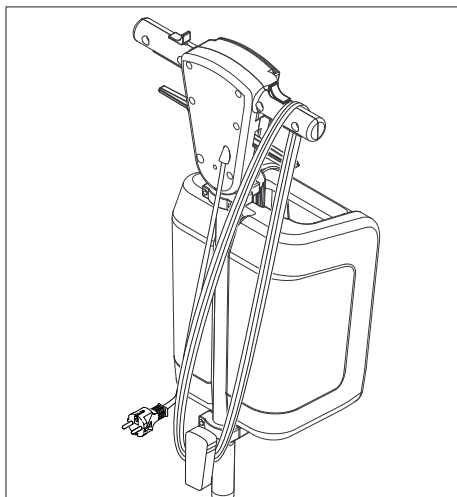
- **Left:** Press the handle downward.
- **Right:** Raise the handle.

## Cleaning

- Apply the detergent solution to the floor or use the dosing lever of the detergent tank.
- Move the appliance over the surface to be cleaned.
- Repeat process for severe contamination.
- Afterwards, pick up the wastewater with a wet vacuum or a cloth.

## Shutting down

- Disconnect the mains plug from the socket.
- Pull the lever for level adjustment and bring the handle in a vertical position.
- Remove the detergent tank and dispose of unused detergent solution.



- Coil the mains cable as shown.
- Rinse the detergent tank with clear water.
- Place the appliance into the parking position.
- Remove the driver plate / disc brush.
- Clean the casing with a damp cloth.

## Transport

### Caution

*Risk of injury and damage! Observe the weight of the appliance when you transport it.*

- Swivel the handle vertically and lock it.
- Tilt the appliance backwards into the transport position and drive it to its destination location.
- When transporting in vehicles, secure the appliance according to the guidelines from slipping and tipping over.

## Storage

### Caution

*Risk of injury and damage! Note the weight of the appliance in case of storage.*

- Place the appliance into the parking position.
- Store the appliance in a dry room, frost-protected room.

## Maintenance and care

- Rinse contaminated disc brushes with water.
- Wash contaminated pads at a max. temperature of 60 °C.
- Clean the casing with a damp cloth.
- Check the mains connection cable for damages.

## Troubleshooting

### **⚠ Danger**

*Risk of injury. Pull the plug from the mains before carrying out any tasks on the appliance.*

In case of faults that cannot be remedied using the table below please contact the customer service.

<b>Fault</b>	<b>Remedy</b>
Insufficient cleaning result	Replace contaminated pads and wash them at a max. temperature of 60 °C.
	Replace worn disc brush / pad.
	Rinse contaminated disc brushes with water
	Check the suitability of brush/pad and detergent for the respective use.
Appliance vibrates strongly	Check for correct seating of disc brush/pad.
	Check pad attachment.
	Check disc brush/driver plate pad for damage.
	Position the handle lower (arms outstretched).
Pad does not turn	Check if foreign bodies are blocking the brush/pad; remove the foreign bodies if required.

## Warranty

The warranty terms published by the relevant sales company are applicable in each country. We will repair potential failures of your appliance within the warranty period free of charge, provided that such failure is caused by faulty material or defects in manufacturing. In the event of a warranty claim please contact your dealer or the nearest authorized Customer Service centre. Please submit the proof of purchase.

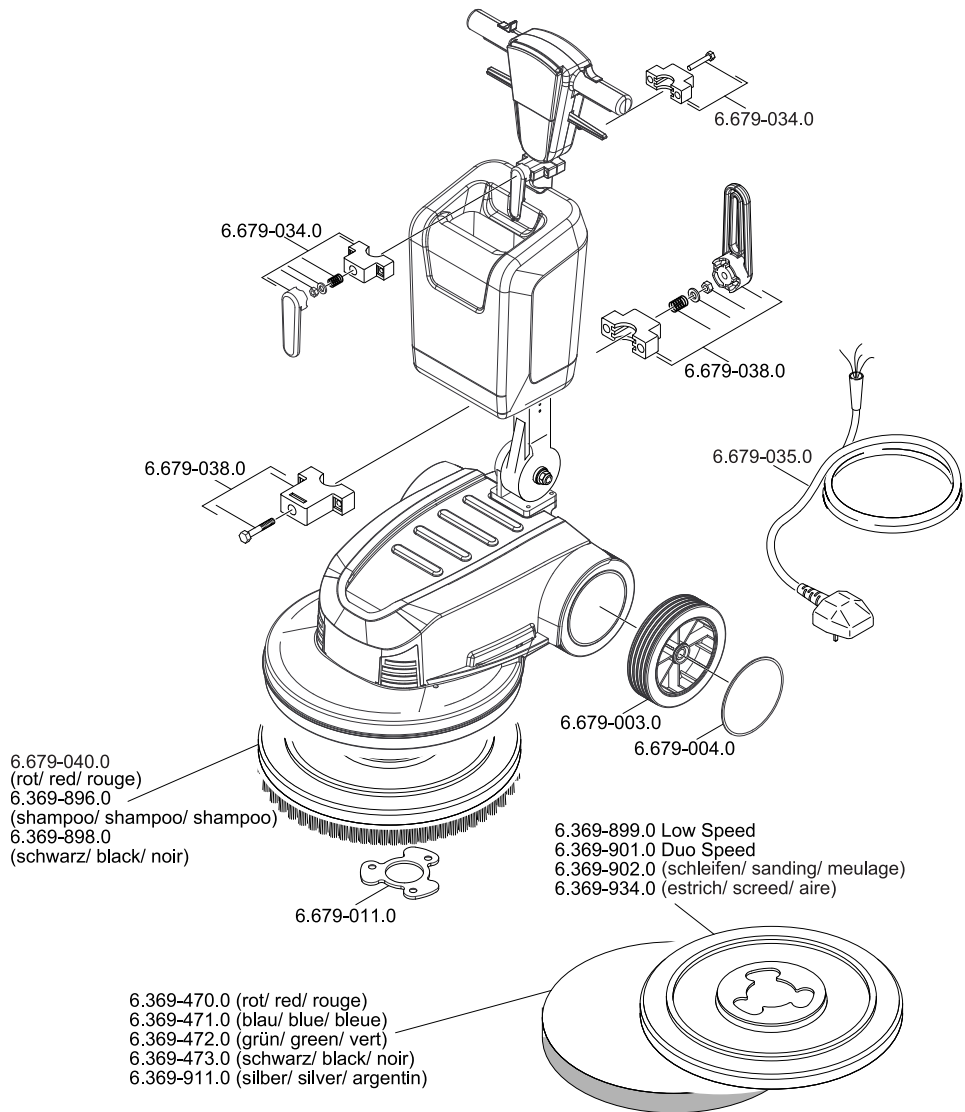
## Accessories and Spare Parts

- Only use accessories and spare parts which have been approved by the manufacturer. The exclusive use of original accessories and original spare parts ensures that the appliance can be operated safely and trouble free.
- At the end of the operating instructions you will find a selected list of spare parts that are often required.
- For additional information about spare parts, please go to the Service section at [www.kaercher.com](http://www.kaercher.com).

<b>Description</b>	<b>Part no.:</b>
Disc brush, medium, red 430mm	6.369-895.0
Disk brush, hard, black, 430mm	6.369-898.0
Shampooing brush, medi- um soft, white/blue, 430mm	6.369-896.0
Pad driver plate, low speed, 430 mm for BDS	6.369-899.0
Pad driver plate, duo speed, 430 mm (for all models)	6.369-901.0
Pads, medium, red 432mm	6.369-470.0
Pads, medium hard, green, 432mm	6.369-472.0
Pads, hard, black, 432mm	6.369-473.0

## Technical specifications

<b>Power connection</b>		
Mains voltage	V/Hz	230/50
Motor output	W	1200
Type of protection		IPX3
<b>Brush/pad</b>		
Diameter	mm	430
Speed	1/min	180
<b>Dimensions and weights</b>		
Weight	kg	42,5
Dimensions (l x b x h)	mm	620 x 450 x 1200
Content detergent tank	l	10
Top clearance	mm	200
Cable length	m	15,0
<b>Values determined as per EN 60335-2-67</b>		
Total oscillation value	m/s <sup>2</sup>	<2,5
Uncertainty K	m/s <sup>2</sup>	0,2
Sound pressure level L <sub>pA</sub>	dB(A)	63
Uncertainty K <sub>pA</sub>	dB(A)	1
Sound power level L <sub>WA</sub> + Uncertainty K <sub>WA</sub>	dB(A)	80







**India Head office**

D 120, Sector 63

Noida 201307

Uttar Pradesh

Tel: +91 120 4661800

Fax: +91 120 4661823

Email: [info@karcher.in](mailto:info@karcher.in)